

# GPS S67-1575-232

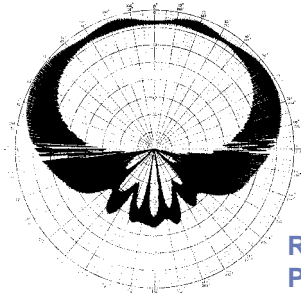
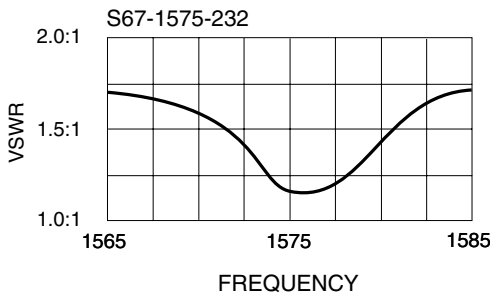


## DESCRIPTION

**S67-1575-232:** This is an active conformal "L1 GPS" antenna currently operational on the Gulfstream GV. A 29.5dB amplifier is integrated in the antenna housing, which includes band pass filtering to provide out-of-band rejection. The antenna has an internal voltage regulator and accepts +4 to +24 VDC. D.C. bias is provided through the center conductor of the connector. This antenna provides omnidirectional coverage with a minimum gain of +1 dBic at zenith. The O.M.L. of the antenna may be changed to meet your specific requirements. The antenna is furnished with a right angle "TNC" connector and weighs nine (9) ounces.

**FEDERAL AND MILITARY SPECS:** MIL-STD-810, RTCA/DO-160, MIL-E-5400.

## PERFORMANCE



1575 MHz  
L1

RADIATION  
PATTERN

**Sensor Systems Inc.**  
8929 Fullbright Avenue  
Chatsworth, CA 91311 USA  
818-341-5366 fax: 818-341-9059  
email: info@sensorantennas.com  
www.sensorantennas.com

## SPECIFICATIONS

GPS

S67-1575-232

### ELECTRICAL

Frequency .....	1575.42±10MHz
VSWR .....	2.0:1
Polarization .....	RHCP
Impedance .....	50 ohms
Axial Ratio.....	≤ 3 dBic @ Zenith
Gain Coverage (min) ...	-1.0 dBic 0° ≤ θ ≤ 75° -2.5 dBic 75° < θ ≤ 80° -4.5 dBic 80° < θ ≤ 85° -7.5 dBic θ = 90° @ Horizon
Gain (preamp).....	29.5± 3 dB
Noise Figure .....	3.0 dB
Power Handling .....	1 watt
Voltage .....	+4 to 24 VDC
Current .....	45 mA
Lightning Protection ...	DC grounded

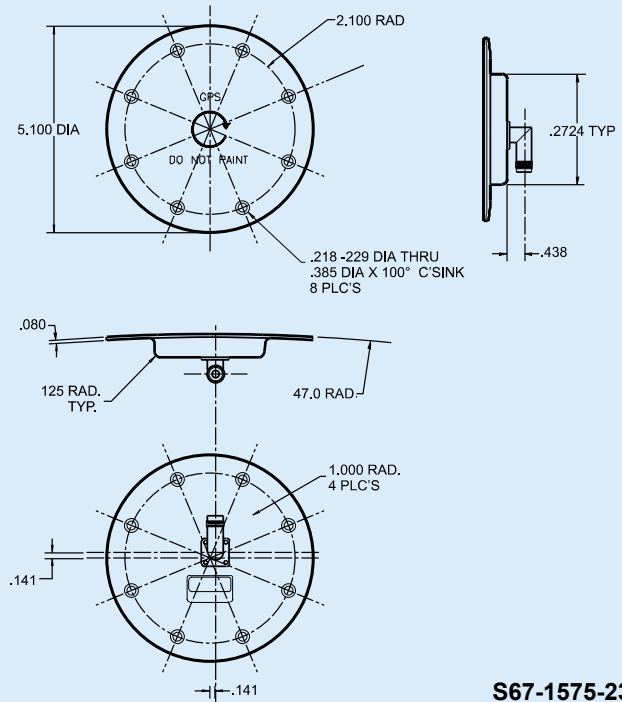
### MECHANICAL

Weight .....	9 oz.
Diameter .....	5.10 in.
Material.....	6061-T6 aluminum / teflon glass
Finish.....	Skydrol resistant enamel
Connector .....	TNC

### ENVIRONMENTAL

Temperature.....	-67°F to +185°F
Vibration.....	10 G's
Altitude.....	55,000 ft.

## OUTLINE DRAWING



S67-1575-232